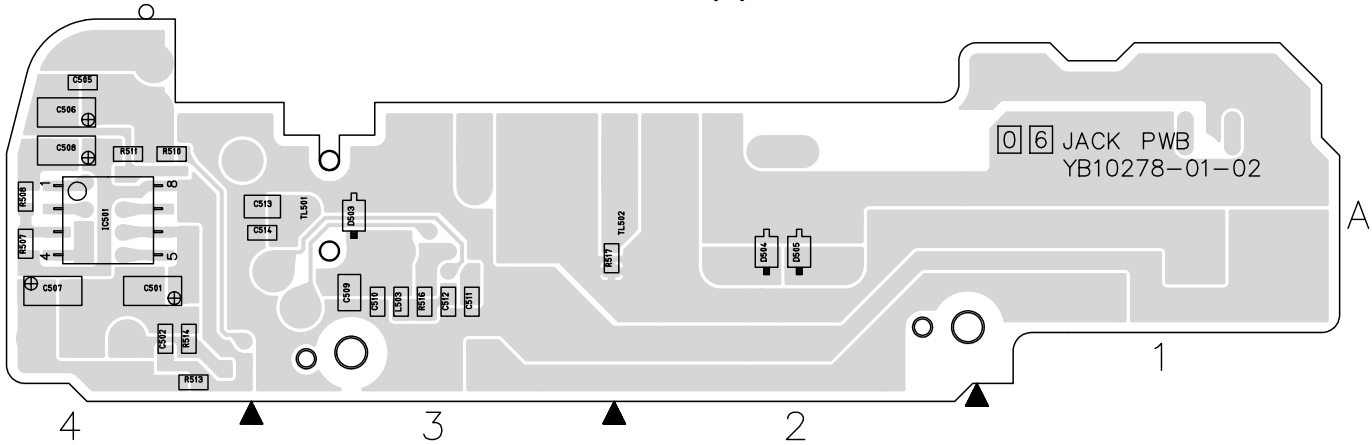


# SECTION 4 CHARTS AND DIAGRAMS

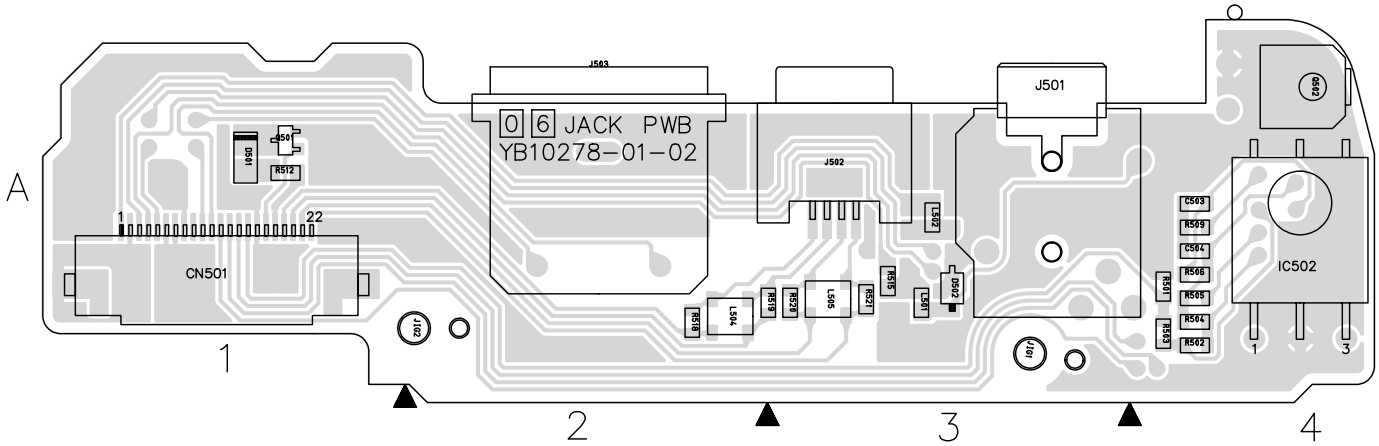
## 4.1 JACK, REAR AND JUNCTION CIRCUIT BOARDS

- JACK -

FOIL SIDE (B)



COMPONENT SIDE (A)

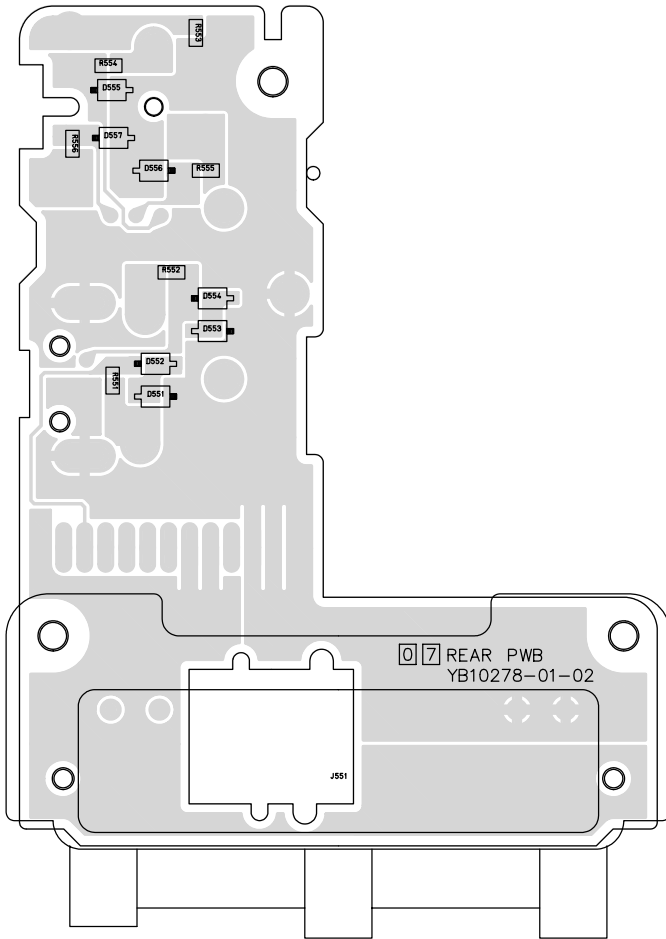


**COMPONENT PARTS LOCATION GUIDE (JACK)**

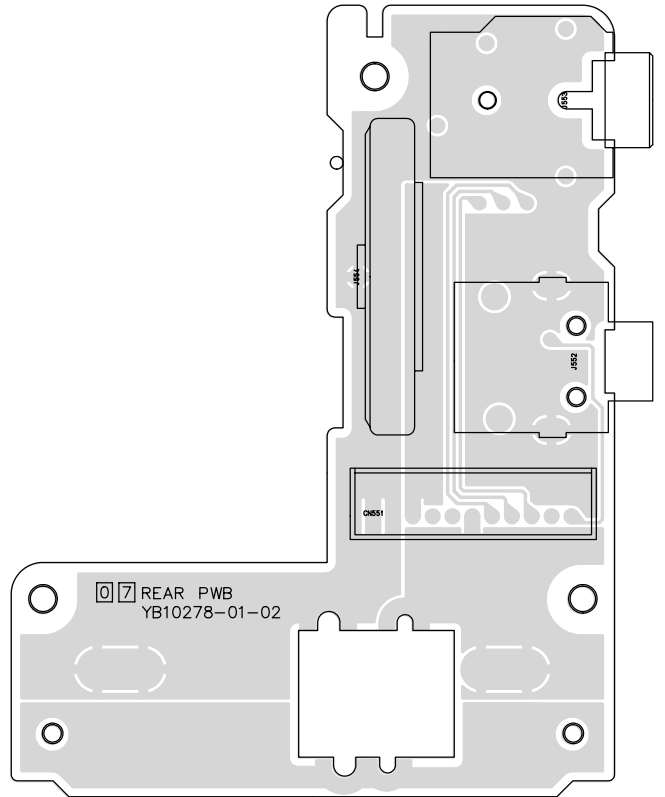
REF.No.	LOCATION	REF.No.	LOCATION	REF.No.	LOCATION	REF.No.	LOCATION	REF.No.	LOCATION
<b>CAPACITOR</b>		<b>CONNECTOR</b>		<b>COIL</b>		R504	A C 4A	R519	A C 3A
C501	B C 4A	CN501	A C 1A	L501	A C 3A	R505	A C 4A	R520	A C 3A
C502	B C 4A	<b>DIODE</b>		L502	A C 3A	R506	A C 4A	R521	A C 3A
C503	A C 4A	D501	A C 1A	L503	B C 3A	R507	B C 4A	<b>OTHER</b>	
C504	A C 4A	D502	A C 3A	L504	A C 2A	R508	B C 4A	J501	A D 3A
C505	B C 4A	D503	B C 3A	L505	A C 3A	R509	A C 4A	J502	A C 3A
C506	B C 4A	D504	B C 2A	<b>TRANSISTOR</b>		R510	B C 4A	J503	A D 2A
C507	B C 4A	D505	B C 2A	Q501	A C 1A	R511	B C 4A	TL501	B C 3A
C508	B C 4A	<b>IC</b>		Q502	A D 4A	R512	A C 1A	TL502	B C 2A
C509	B C 3A	IC501	B C 4A	<b>RESISTOR</b>		R513	B C 4A		
C510	B C 3A	IC502	A D 4A	R501	A C 4A	R514	B C 4A		
C511	B C 3A			R502	A C 4A	R515	A C 3A		
C512	B C 3A			R503	A C 4A	R516	B C 3A		
C513	B C 3A					R517	B C 3A		
C514	B C 3A					R518	A C 2A		

- REAR -

FOIL SIDE (B)

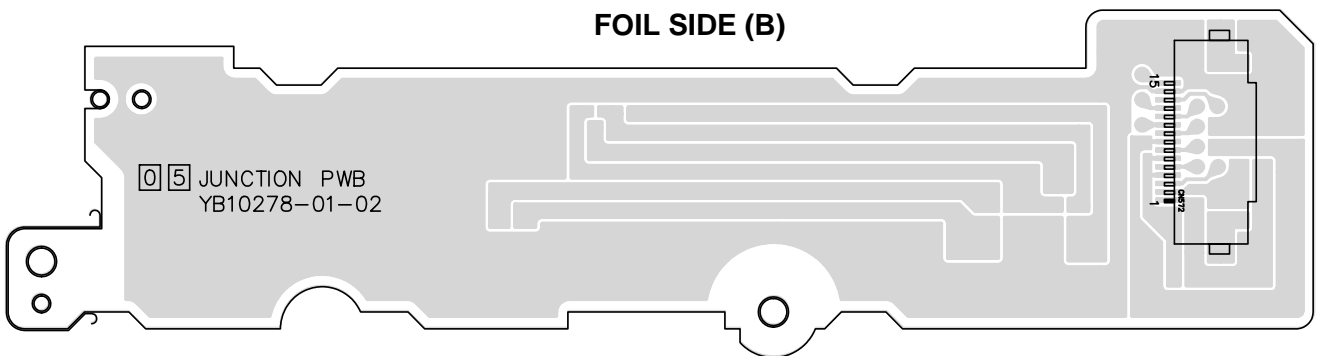


COMPONENT SIDE (A)



- JUNCTION -

FOIL SIDE (B)



COMPONENT SIDE (A)

